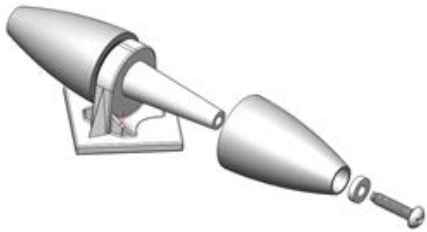


AndyMark 4" Mecanum Wheel (am-2626)

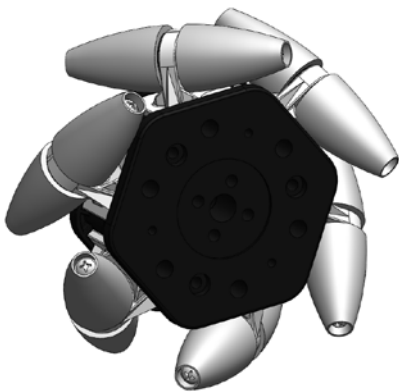
1. Place the roller onto the arm of the spindle, add a washer and secure with a 0.500 inch #4-40 screw (am-1141). Be sure to tighten the screw until the roller can no longer wiggle along the axle but rolls freely. Feel free to use a powered screwdriver to tighten the screws but finish and adjust each screw by hand with a screwdriver.



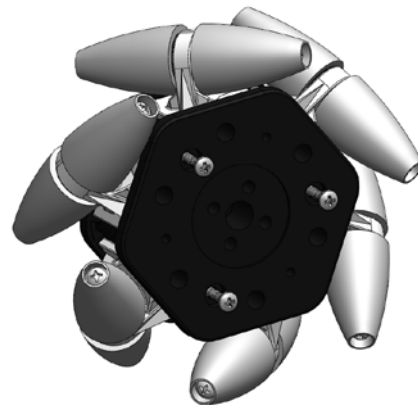
2. With 6 spindles fully assembled, place the spindles into 1 half of the body. Left and right wheels are made by changing the orientation of the spindles.



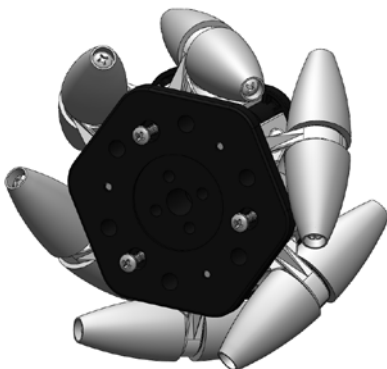
3. Now take the second half of the body and press it onto the bases of the spindles. Also make sure that the large clearance holes in one half line up with the smaller holes in the other half.



4. Secure the 2 body halves together with 3x 1.00 inch long #4-40 screws.



5. Flip the wheel over and add the last 3, 1.00 inch long #4-40 screws to finish the assembly.



6. When building a set of 4 wheels, make sure you have 2 right handed wheels and 2 left handed. When looking at the robot from the top, the top most rollers should form an "X".

